

PROJECT • EXPERT

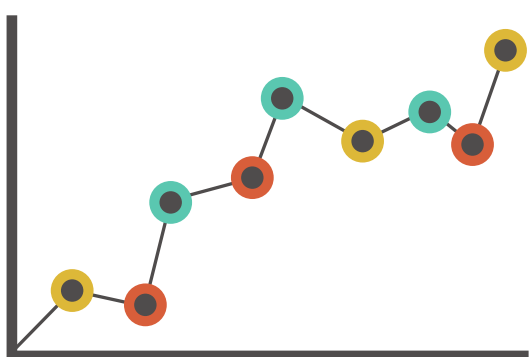
Supporting teacher expertise in data-based decision-making to improve outcomes for upper elementary students with reading disabilities

RESEARCH PROJECT

Our team aims to develop and test the *EXPERT Program* to build teachers' capacity to use student progress data for instructional decision-making with upper elementary students with reading disabilities (RD).

We are recruiting 3rd to 5th grade teachers who provide reading intervention, and their students, to participate in this research project.

This study has been approved by The University of Texas at Austin Institutional Review Board.



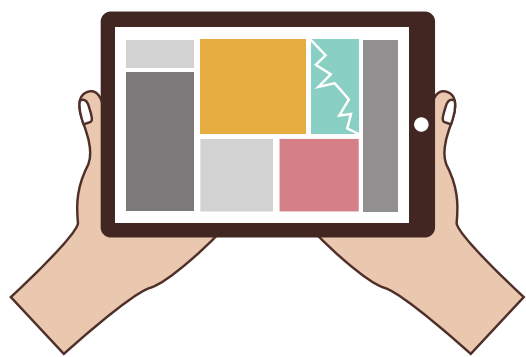
WHAT IS THE EXPERT PROGRAM?

Teachers engage with a suite of resources to support their expertise in data-based decision-making, including:

- Introductory professional development webinar
- Individualized coaching and supports
- Use of the web-based *EXPERT Monitoring Tool* to enter data and generate progress graphs
- EXPERT video library with mini module resources

YOUR EXPERT COACH

Each participating teacher works with an EXPERT Coach who provides individualized supports to develop knowledge and skills based on your interests. Coaches work collaboratively with teachers to build expertise and facilitate access to program resources.



EXPERT MONITORING TOOL

This web-based tool was developed by the research team to support use of data for instructional decision-making. It serves to support efficient graphing and analysis of student progress data. The tool's guided decision tree and weekly "Data Chats" with the EXPERT Coach are designed to promote self-monitoring of data use practices.

TEACHER COMMITMENT

Teachers continue to make all decisions related to instruction and intervention while participating in the *EXPERT Program*. We do not require use of any particular reading program. We will provide CBM materials if you don't already use a progress monitoring system.

We anticipate teachers may dedicate up to a maximum of 15 hours over 12-16 weeks. Participation will include online surveys, weekly CBM data collection, initial professional development, and regular meetings with EXPERT Coach.

\$150 compensation for participating teacher upon completion of study activities



jrtoste@austin.utexas.edu



@DrToste



www.jessicatoste.com



The Meadows Center
FOR PREVENTING EDUCATIONAL RISK



The University of Texas at Austin
College of Education